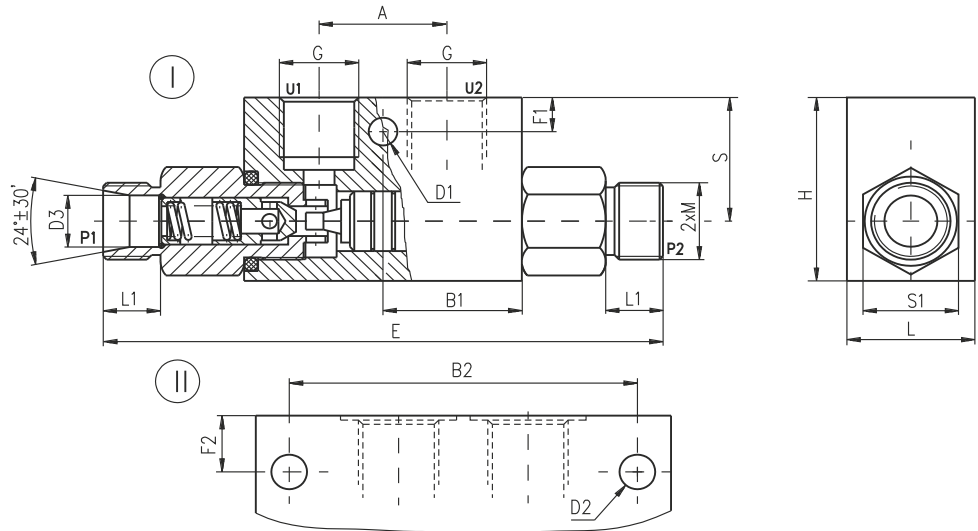


DESCRIPTION

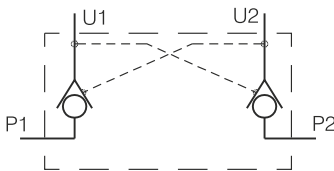
✓ Check valves with hydraulic operation for pipe mounting-KOHU...-E...
 ✓ Hydraulically operated check valve is designed to allow working liquid passing in one direction freely (U₂ to P₁, U₁ to P₂) and at availability of control signal in the opposite direction (P₁ to U₁, P₂ to U₂). The valve ensures hydraulic "locking" of the hydraulic cylinders, i.e. Providing their stability under load at neutral position of the directional control valve.

DIMENSIONS



TYPE	fig.	A	B1	B2	D1	D2	D3	F1	F2	L	L1	G	M	H	S	S1	E
mm																	
KOHU1815-E	I	29	31,5		ø6,5		ø12	8		30	13	G3/8"	M18x1,5	43	29	24	130
KOHU1815-EL	I	38	40		M8x20		ø12	8		30	13	G3/8"	M18x1,5	40	26	24	130
KOHU1815-EN	I	29	31,5		ø6,5		ø12	8		30	13	G3/8"	M18x1,5	43	29	24	130
KOHU2615-E	II	40		75	ø8,5		ø18		17	40	14	G1/2"	M26x1,5	60	40	32	174

SYMBOL



ORDERING CODE

KOHU *** - E ***

Check valve with hydraulic operation

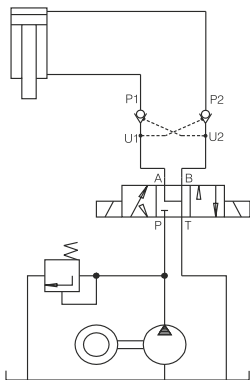
Connecting threads: M18x1,5 - 1815
 M26x1,5 - 2615

Modification

Versions:
 see table of dimensions

L
 N

APPLICATIONS



TECHNICAL DATA

Max. Pressure		320 bar
Rated flow	KOHU1815-E	20 l/min
	KOHU1815-EL	20 l/min
	KOHU1815-EN	30 l/min
	KOHU2615-E	45 l/min
Cracking pressure (for check valve)	for all types	0,5 bar
Area ratio (check valve seat/pilot piston)	for all types	1/4
Working liquid-hydraulic oils with characteristics:		
-viscosity		10...400 cSt
-degree of filtration		0,025 mm
-temperature		-20...+80°C